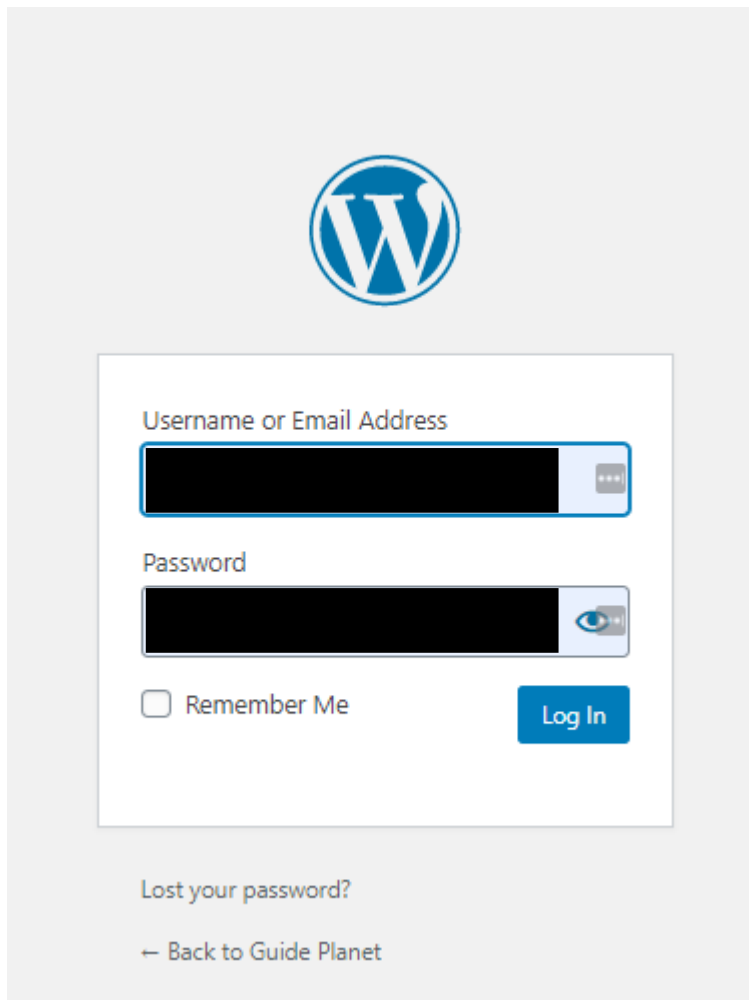
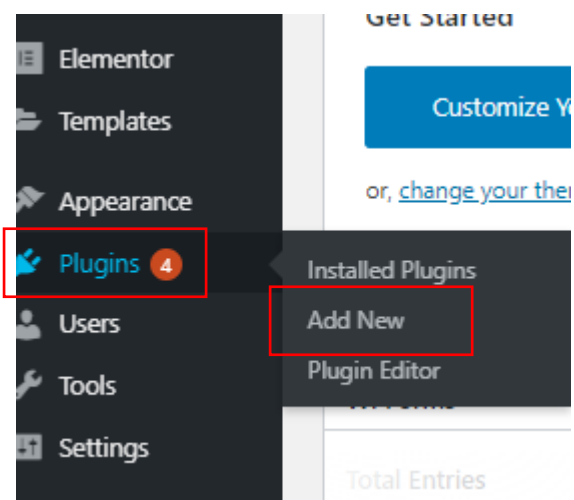


Using wordpress migration to migrate your data to a new host.

Log into your old wordpress site (domain.com/wp-admin):




Go to plugins, add new:



Search for all-in-one wp:

Keyword

Install then activate:



### All-in-One WP Migration

Move, transfer, copy, migrate, and backup a site with 1-click. Quick, easy, and reliable.

By *ServMask*

[Install Now](#)

[More Details](#)

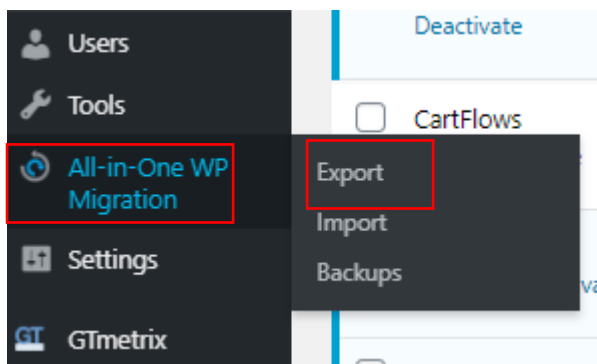
★★★★★ (6,295)

2+ Million Active Installations

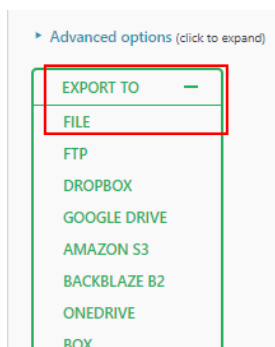
Last Updated: 4 days ago

✓ Compatible with your version of WordPress

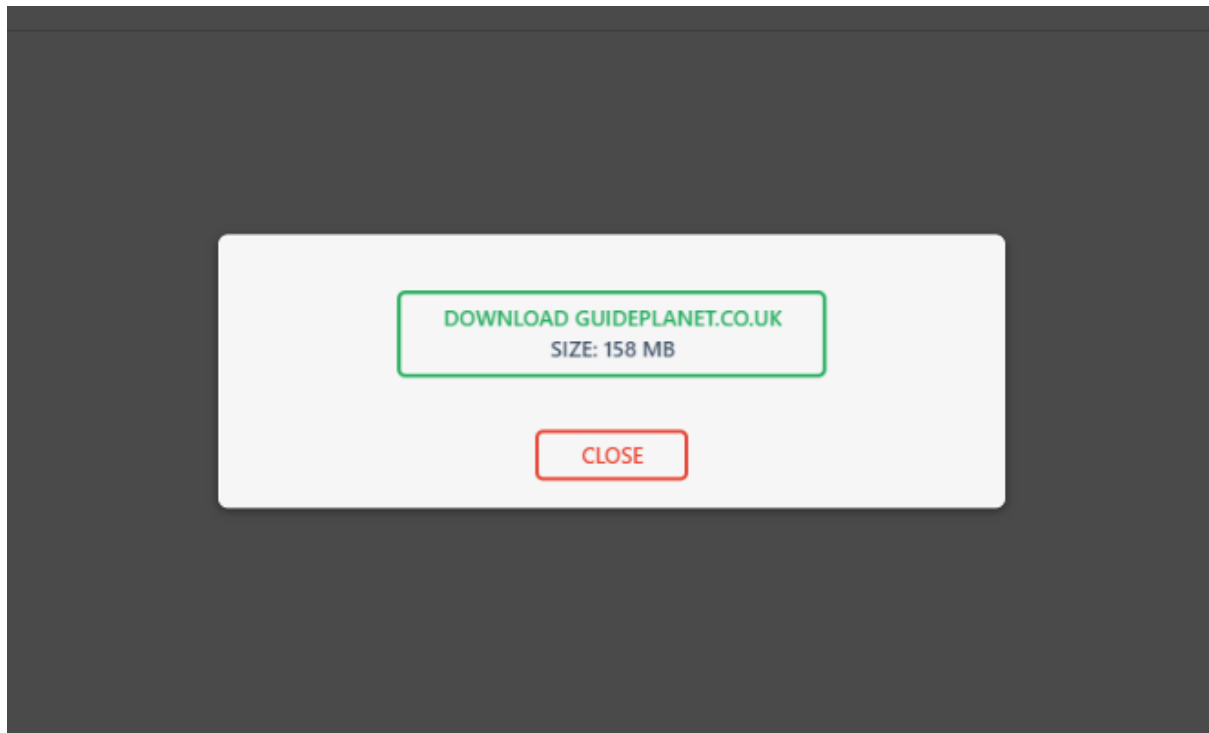
Then it will appear in the side panel, go to it then export:



Click export to then file:



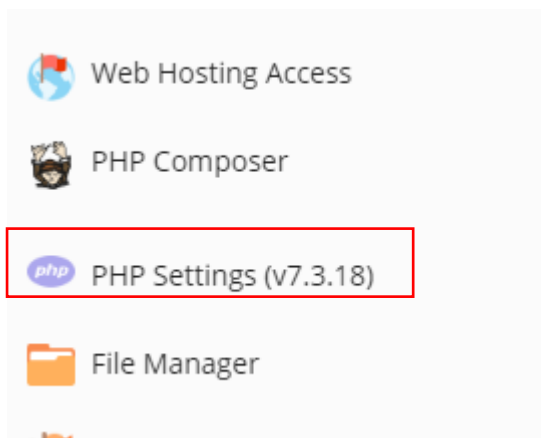
This will open a box with progress, once finished click to download the file:



While this downloads head over to where you have the domain name servers, change the IP address, add the domain to plesk and install wordpress this is outlined in step 3 and step 5 here:

<https://guideplanet.co.uk/index.php/my-first-site-with-wordpress-on-plesk/>

Now in plesk we need to raise the PHP upload limits, go to the domain and php settings:

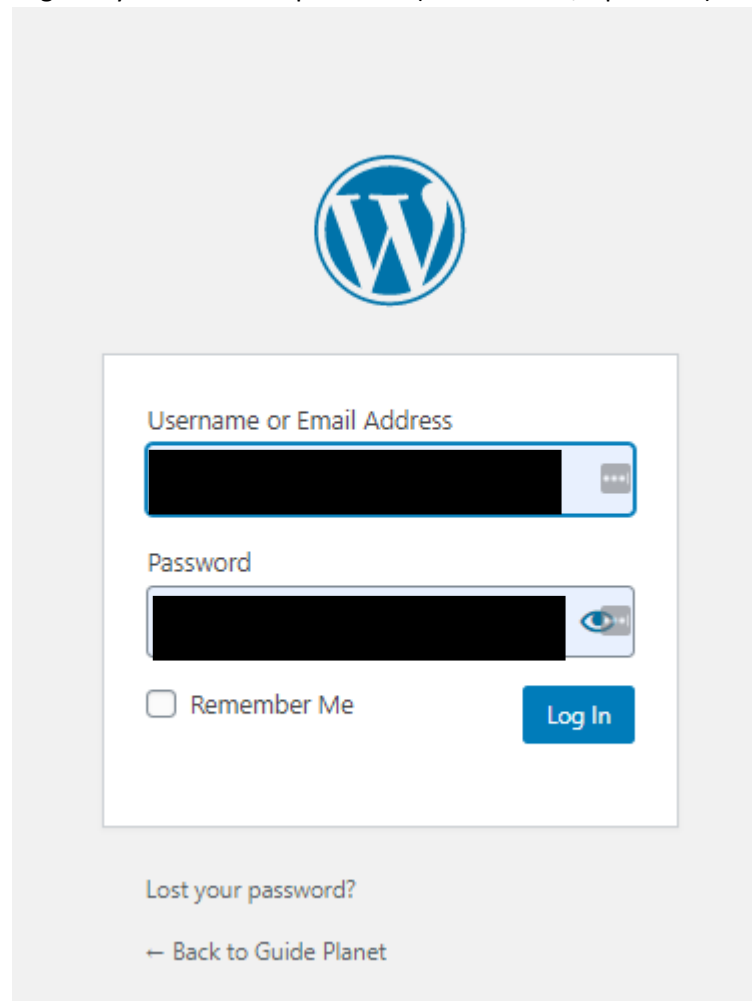


And raise the upload\_max\_filesize and post\_max\_size both to 10000m and click OK

|  |                                     |                                  |
|--|-------------------------------------|----------------------------------|
| post_max_size ?  | <input type="text" value="10000m"/> | <a href="#">Reset To Default</a> |
| The maximum size in bytes of data that can be posted with the POST method. Typically, should be larger than upload_max_filesize and smaller than memory_limit. |                                     |                                  |
| upload_max_filesize ?  | <input type="text" value="10000m"/> | <a href="#">Reset To Default</a> |
| The maximum size in bytes of an uploaded file.   |                                     |                                  |

Now we reinstall the plug in onto the new site (This will be different install, so keep watching):

Log into your new wordpress site (domain.com/wp-admin):

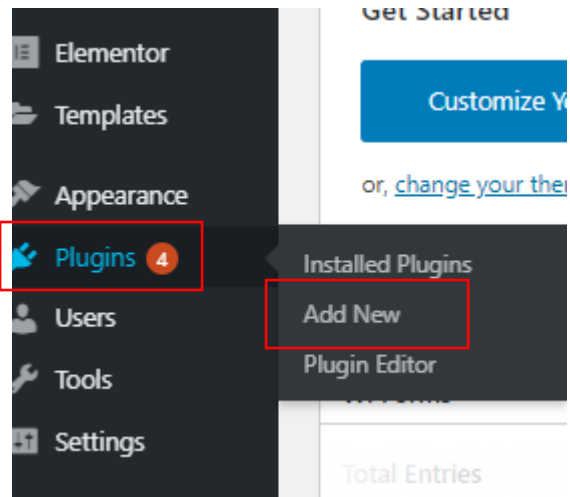


The image shows the WordPress login interface. At the top center is the WordPress logo. Below it is a white login box with a blue border. Inside the box, there are two input fields: 'Username or Email Address' and 'Password'. Both fields are currently empty. Below the 'Password' field is a checkbox labeled 'Remember Me'. To the right of the 'Remember Me' checkbox is a blue 'Log In' button. Below the login box, there is a link 'Lost your password?' and a link '← Back to Guide Planet'.

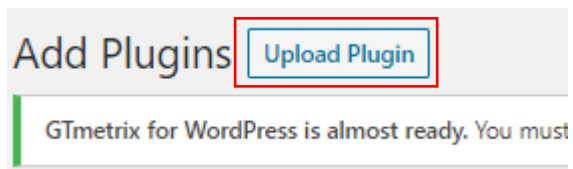
Download this zip (We need an older version as there is a bug on the newer version so this will give an older version):

<https://www.vishaltalks.com/wp-content/uploads/2019/08/all-in-one-wp-migration-6.7.zip>

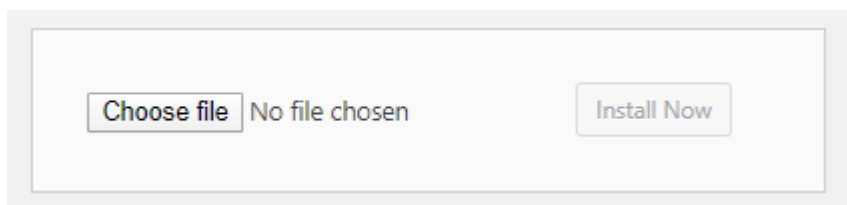
Go to plugins, add new:



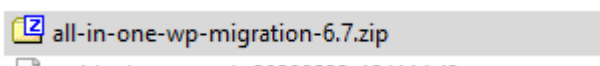
Click on Upload Plugin:



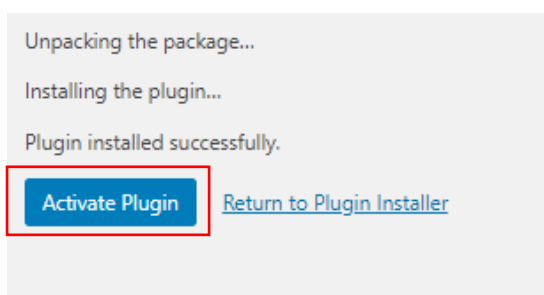
Choose file:



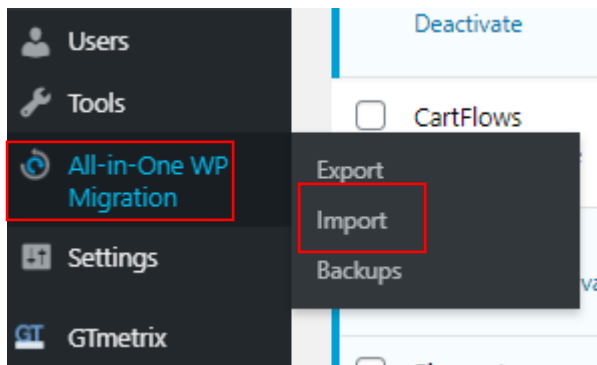
Select the ZIP and then install now:



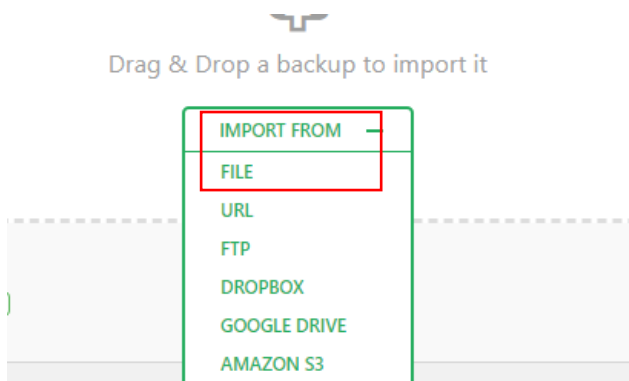
Activate plugin:



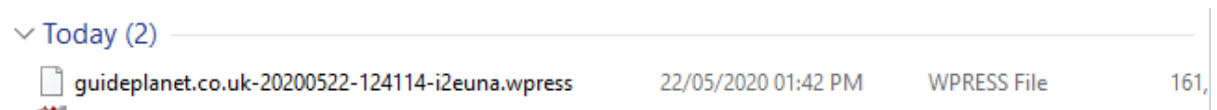
Then it will appear in the side panel, go to it then import:



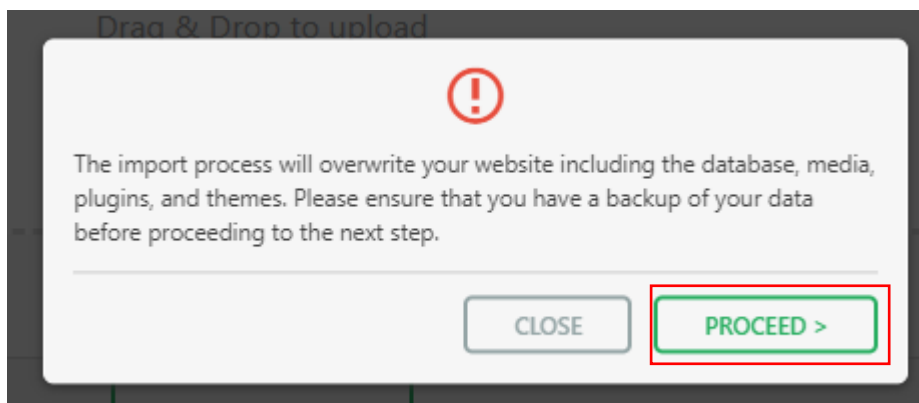
Import from file:



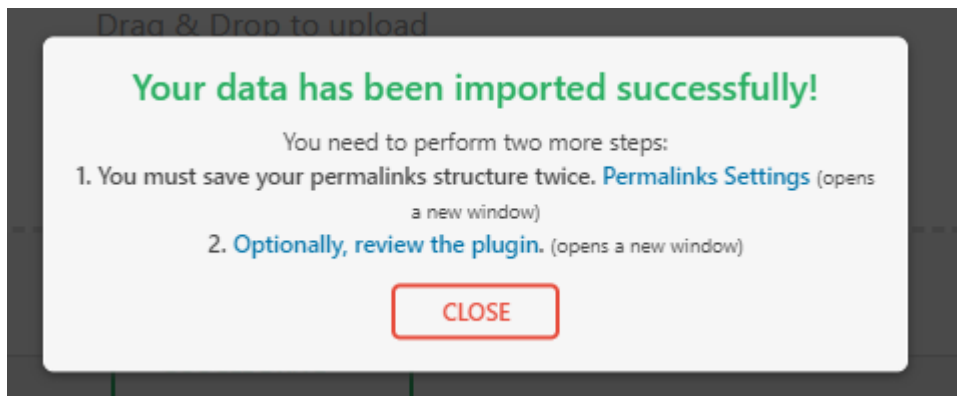
Select the file we previously downloaded:



This will open a new box where it will be importing, give it a bit of time to complete this then click proceed:



Close this window when you see this:



This import is now done, but we need to do one more thing, set the PHP back to the original value so head back to plesk and php settings and select reset to default:

